

00091

AAJ/SPA/CPT/25/12

COMPUTER PRACTICAL TEST

Full Marks : 50

Time : 1½ hours

The figures in the margin indicate full marks for the questions

1. (a) Create a document with the following text :

Renewable energy sources are crucial for a sustainable future. They provide power without depleting natural resources and help in reducing global carbon emissions. Solar and wind power are among the most widely adopted green technologies today.

The core components of a solar power system include solar panels, an inverter and a battery storage unit. The panels capture sunlight and convert it into direct current electricity. The inverter then changes this into alternating current for home or grid use.

As technology improves, the efficiency of these systems continues to increase while costs fall. Governments worldwide are offering incentives to encourage the adoption of renewable energy, making it an increasingly attractive option for homeowners and business alike.

(2)

(b) Apply the following formatting to the above document :

(i) Divide the text into three paragraphs and apply center alignment to the first paragraph and justify alignment to the second and third.

(ii) Apply a drop cap to the first letter of the first paragraph and boldface the first sentence of the second paragraph.

(iii) Change the font style to Cambria and font size to 14 for the 3rd paragraph. Set its line spacing to 2·0

(iv) Insert the following table after the second paragraph :

<i>S. No.</i>	<i>Energy Source</i>
1	Solar Power
2	Wind Power

(Both headings should be bold. 'Solar Power' and 'Wind Power' should be in italics.)

(v) Set the page layout to portrait with the following margins :

Top—0·75", Bottom—1",

Left—1·25", Right—1"

2+2+2+2=10

2. Create a new workbook as shown below and name it StudentMarks :

Roll No.	Student Name	Marks 1	Marks 2	Total	Percentage	Grade
101	Priya	85	90			
102	Ankit	78	82			
103	Sneha	92	88			
104	Rohan	65	70			
105	Meera	95	94			

- (a) Calculate Total = Marks 1 + Marks 2 using a formula
- (b) Calculate Percentage = $(\text{Total}/200) * 100$
- (c) Fill Grade using the following conditions :
- If Percentage $\geq 90 \rightarrow$ Grade A+
 - If $75 \leq$ Percentage $< 90 \rightarrow$ Grade A
 - If $60 \leq$ Percentage $< 75 \rightarrow$ Grade B
 - Else \rightarrow Grade C
- (d) Format the Percentage column to show values with a % symbol and one decimal place (e.g., 87.5%).
- (e) Apply All Borders to the entire data range and shade the header row in Light Gray. 2+1+3+2+2=10

(4)

3. (a) Create a table named Book_Inventory with the following structure :

<i>Field Name</i>	<i>Data Type</i>
BookID	Varchar
Title	Text
Author	Text
Price	Number (Decimal)
PublishedYear	Date
InStock	Boolean (Yes/No)

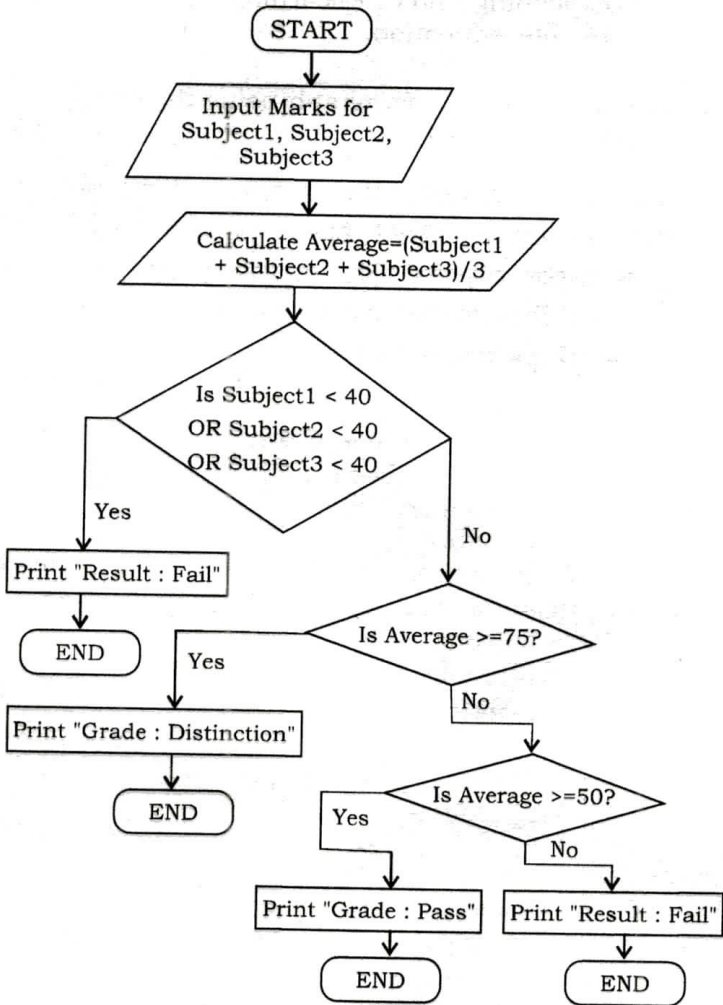
- (b) Insert at least 5 records into the table.
- (c) Write a query to display the Title and Author of all books where the InStock status is Yes.
- (d) Write a query to display all books published after the year 2015, sorted by Price in descending order.
- (e) Delete the Published Year column from the table. $2+2+2+3+1=10$
4. (a) Create a presentation of three slides on the topic 'The Benefits of E-Learning'. Use automatic slide advancement after 5 seconds.

5

(5)

(b) Prepare a slide containing the flowchart shown below :

3



(c) Insert a relevant image (e.g., a student using a laptop) and write 3-4 lines explaining how e-learning facilitates remote education.

2

5. Type the following paragraph using the given Assamese typing tool :

10

ৰুক্ষিণীহৰণ, পাৰিজাতহৰণ আৰু ৰামবিজয়—এই তিনিখন শংকৰদেৱৰ নাট্যকৃতিৰ উৎকৃষ্ট উদাহৰণ বুলি থাৱৰাব পাৰি। কেৱল ভাৰতীয় নাট্যশাস্ত্ৰত বৰ্ণিত ৰস সৃষ্টিৰ ক্ষেত্ৰতে নহয়, পাশ্চাত্য নাট্যতত্ত্বৰ পিনৰপৰা লক্ষ্য কৰিলেও এই কেইখনক ওখ পৰ্যায়ৰ সৃষ্টি বুলি নিঃসন্দেহে কব পাৰি।

★ ★ ★